

THE LITTLE TREK DUDES ARE BACK!

**THE DEFINITIVE COLLECTION OF THE ORIGINAL HAKO CLONES MADE
IN 2004 USING THE MASAMUNE WASHINGTON DEVELOPED TEMPLATE**

COURTESY OF

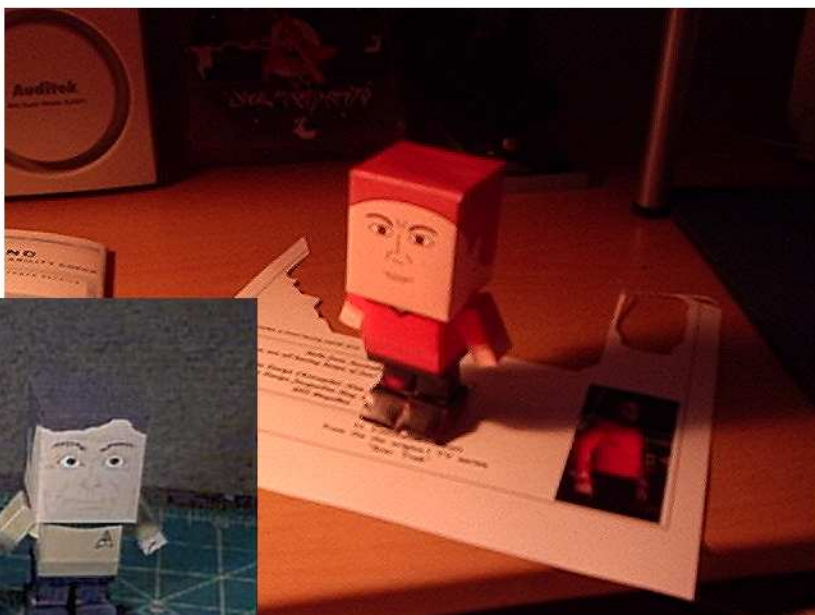
**BUTCH PRICE OF HAKOMANIA
<http://groups.yahoo.com/group/hakomania>**

**KIROK OF L'STOK
<http://groups.yahoo.com/group/StarTrekPaperModels>**

and Frank Johnson for all his Tribble!

A Hako Clone is a small model caricature, typically of a TV or movie character or celebrity, that is easy to design, mostly based on standard templates, and easy to build. The idea behind them is that they are quick, simple and Fun - all attributes that make them an ideal introduction to paper modelling for kids.

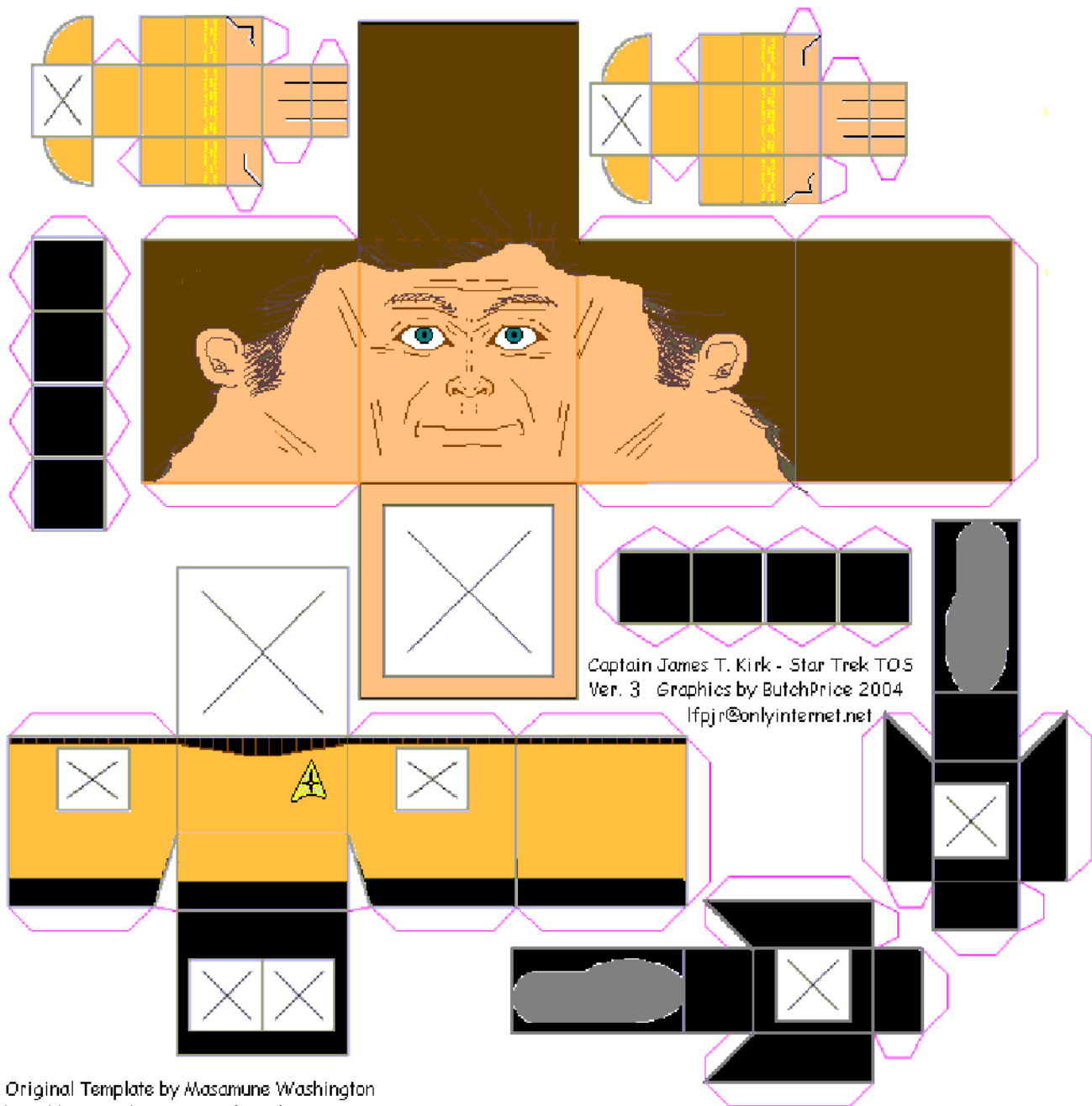
Part of the Twelve Trek Days of Christmas, 2007
<http://12daysxmas.thunderdownunder.org>



These Free paper models are all Fan productions and are not meant to infringe the trademarks and copyrights of Star Trek which lie with CBS / Paramount.

No profit can be directly or indirectly made from Fan productions and any attempt to sell, rent or otherwise make a profit from any of these projects will be reported to the copyright owners or their licensees for their action.



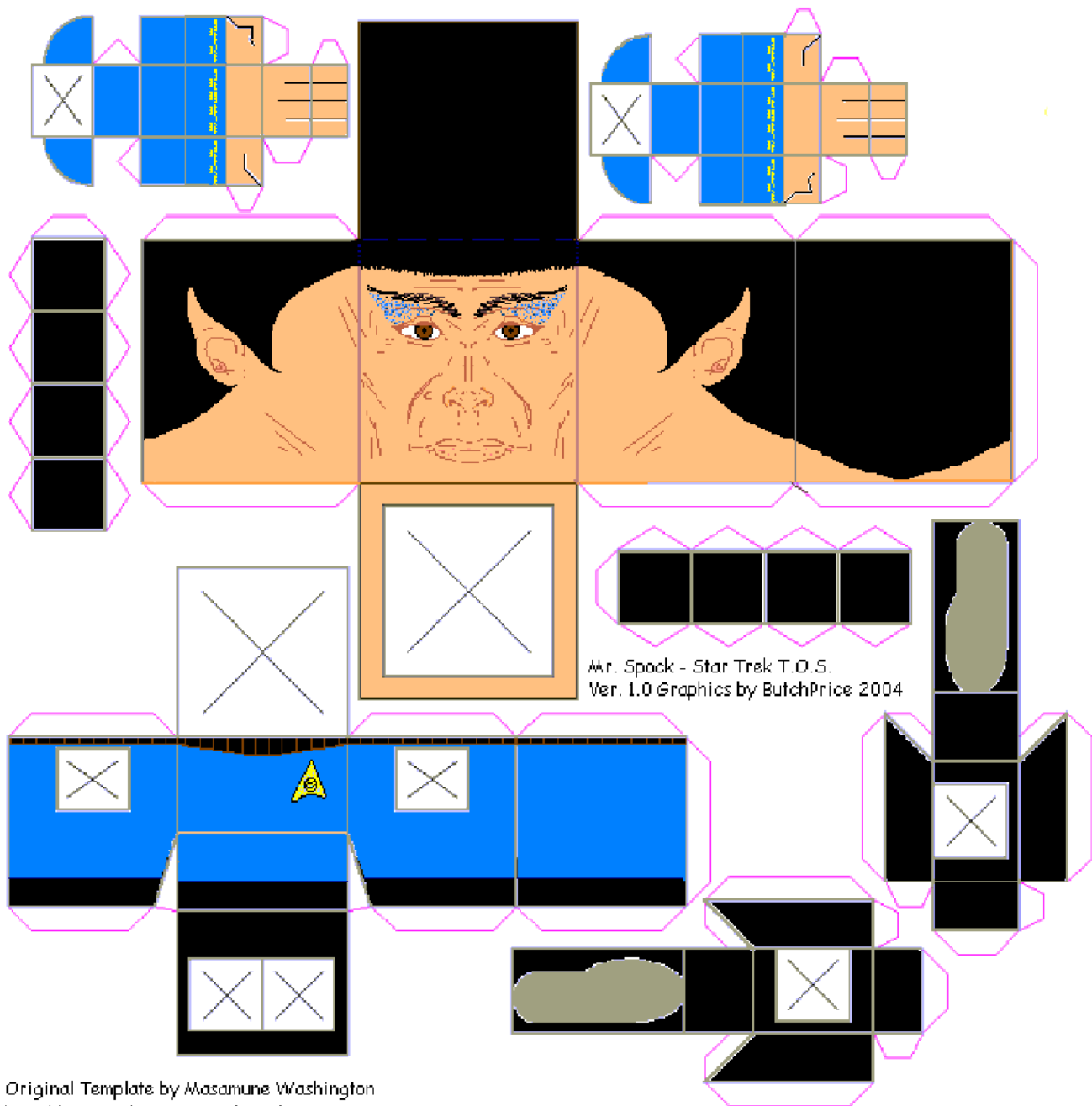


Original Template by Masamune Washington
<http://jove.prohosting.com/~madanger>

Back in 2004, I became enamored with the "Hako" variety of paper model. Being a life long Trek fan, I found it very rewarding to create some caricatures of the beloved TOS crew members. So I set about creating many of the most memorable characters for me. Kirk, Spock, an McCoy were the first, and shortly thereafter were followed by Sulu, Uhura, and Chekov. In a bit of whimsy, I also created a couple of the "Away Team" characters. A parody of the crew members you only saw once, and knew they were to meet certain doom during the program. The "Hako-Mania" that ensued was beyond my wildest expectations, and has blossomed into a popular form of self expression for many aspiring paper model aficionados. The original crew are still some of my favorites, and have spawned many more Trek related hakos along the way. I feel blessed to have been associated with this in my own small way.

In the words of Spock "Live Long and Prosper,"

ButchPrice



Mr. Spock - Star Trek T.O.S.
Ver. 1.0 Graphics by ButchPrice 2004

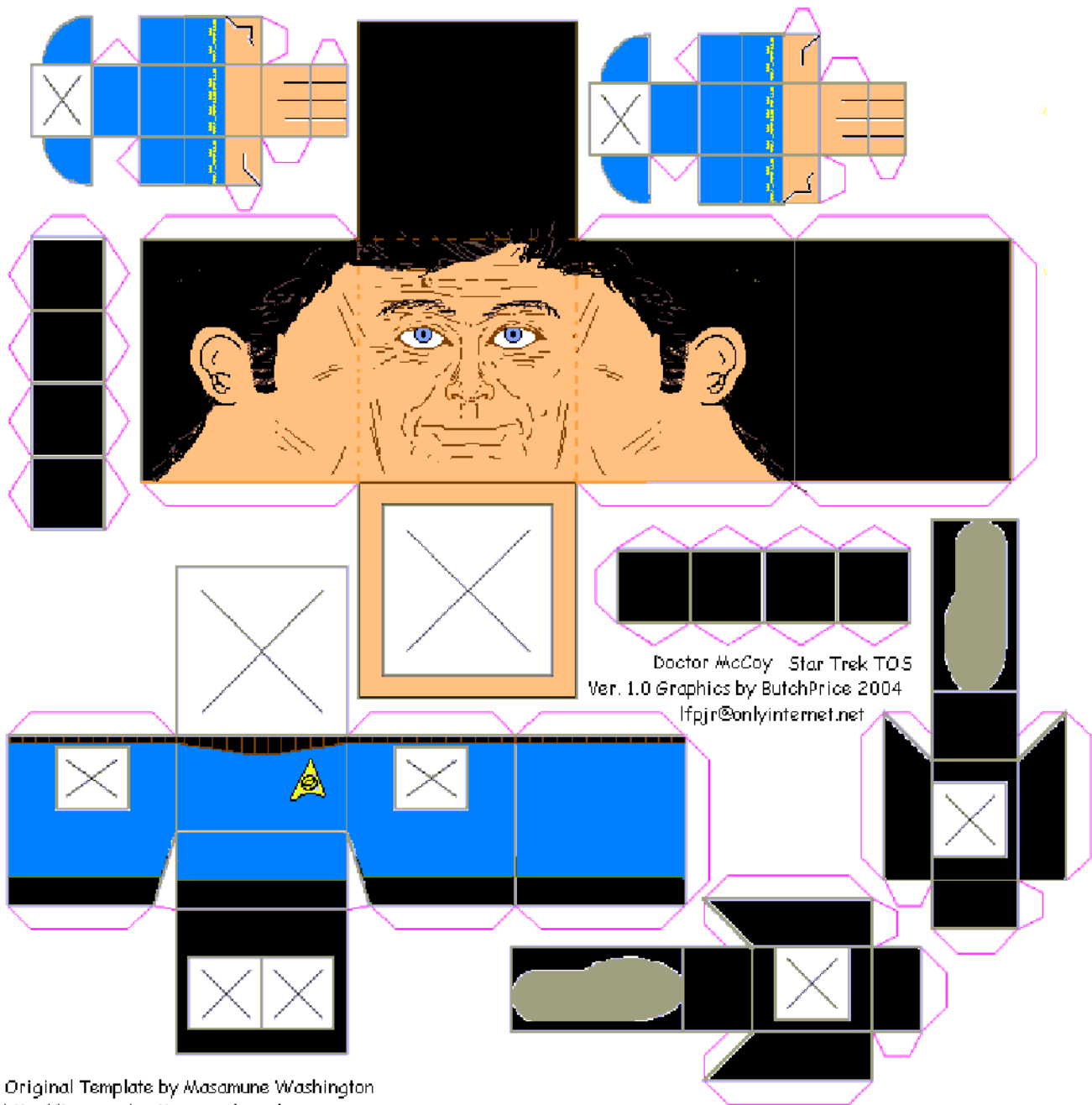
Original Template by Masamune Washington
<http://jove.prohosting.com/~madanger>

Whilst Butch was very much the "prime-mover" in spreading the word about Hakos - and still is as you'll see from his Yahoo group, Hakomania - but it would be remiss of us not to acknowledge our debt to that shadowy figure of the internet, the champion of vector graphics, the Magnanimous Modeller Masamune - Masamune Washington! His carefully cultivated online persona as the "Mad Modeller" belied the grace and open-handed generosity with which he was ever ready to help. None of this would have been possible without his development work.

Hakos are meant to be fun and whimsical, charming and cute, hopefully showing that elegance in simplicity known as 'shibumi'. I look at my first figures here and cringe at how unskilled I was - especially the faces: Yeoman Rand was my first attempt at a Manga style face!

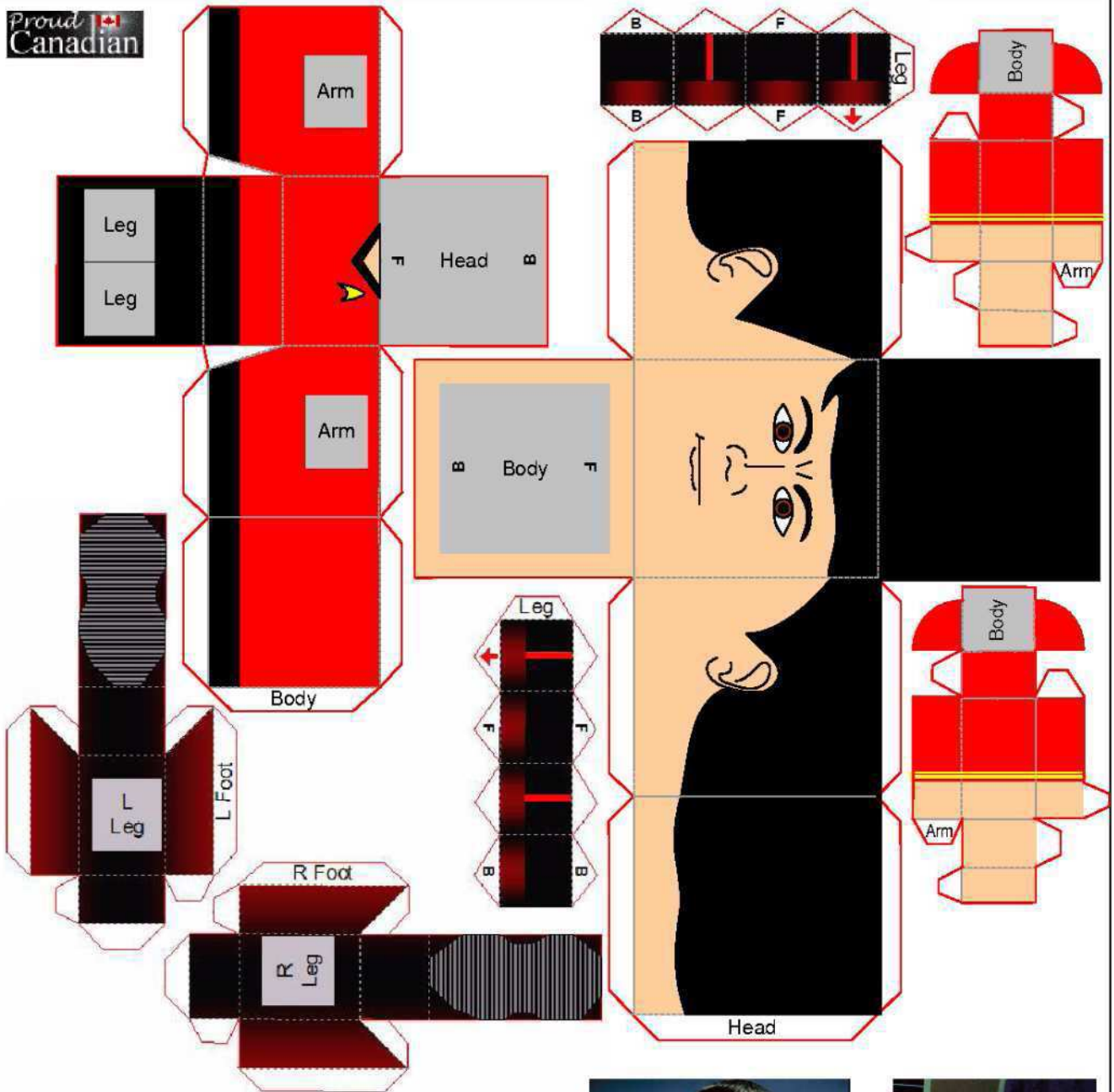
If you enjoy what you see here make more - design your own! - give them away freely and spread the smiles!

...and always remember ... "bISovbejbe'DI' tImer" ... When in doubt, surprise them!



Doctor McCoy Star Trek TOS
Ver. 1.0 Graphics by ButchPrice 2004
lfqjr@onlyinternet.net

Original Template by Masamune Washington
<http://jove.prohosting.com/~madanger>

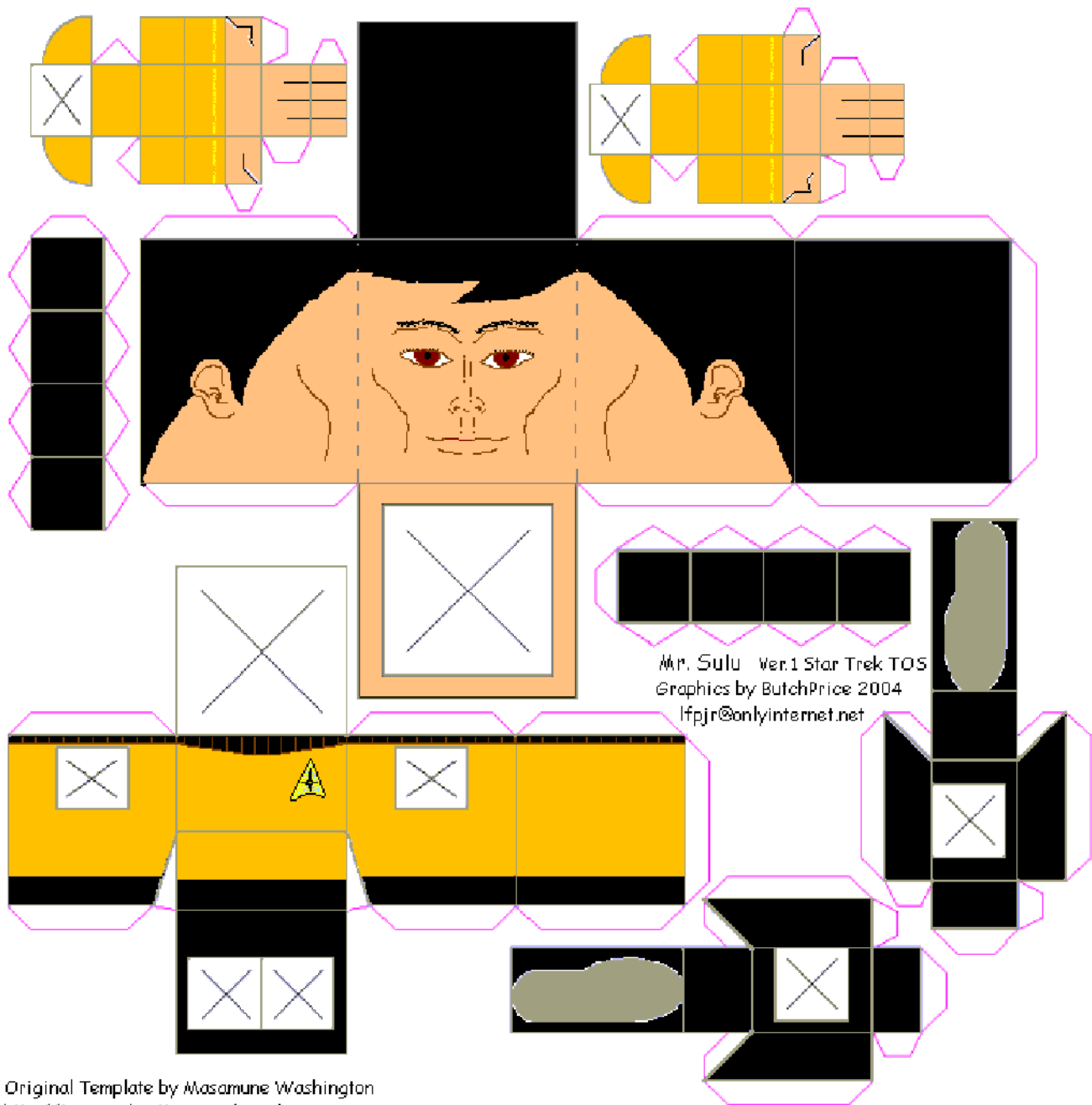


"F" Denotes a front facing panel and "B" a back facing panel

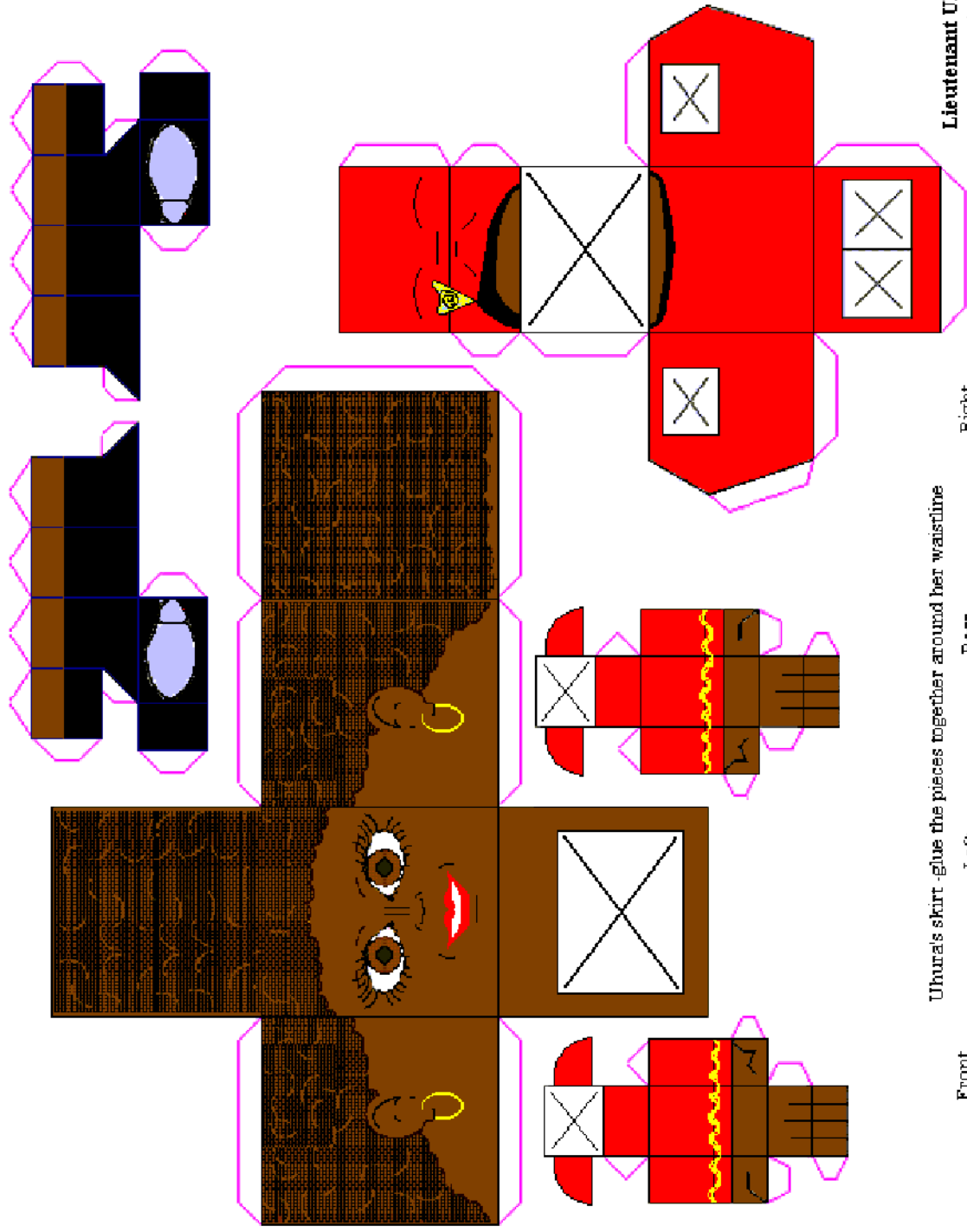


Lt. Commander Scott From the the original TV series "Star Trek"

This model, which is based on an original design by Masamune Washington, was created solely for the entertainment of the officers and crew of the USS Magellan and our friends. It is not intended to infringe on the copyrights or trademarks of Star Trek™, as held by Paramount Pictures and Viacom Entertainment. Permission is hereby granted to anyone who wishes to reproduce the original material herein for non-commercial use, provided that the source of the material is included.



Original Template by Masamune Washington
<http://jove.prohosting.com/~madanger>



Uhura's skirt - glue the pieces together around her waistline

Front

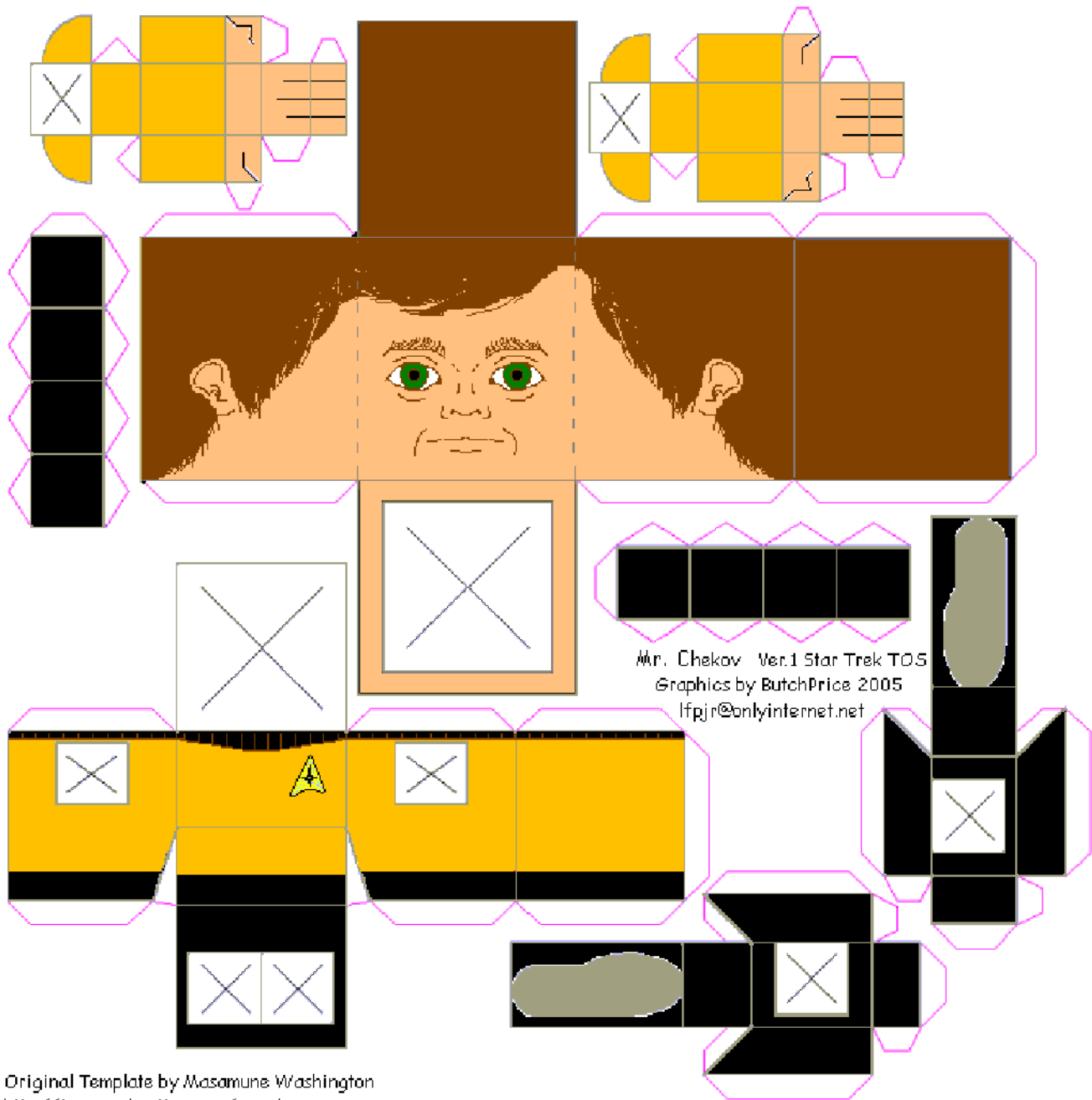
Left

Rear

Right

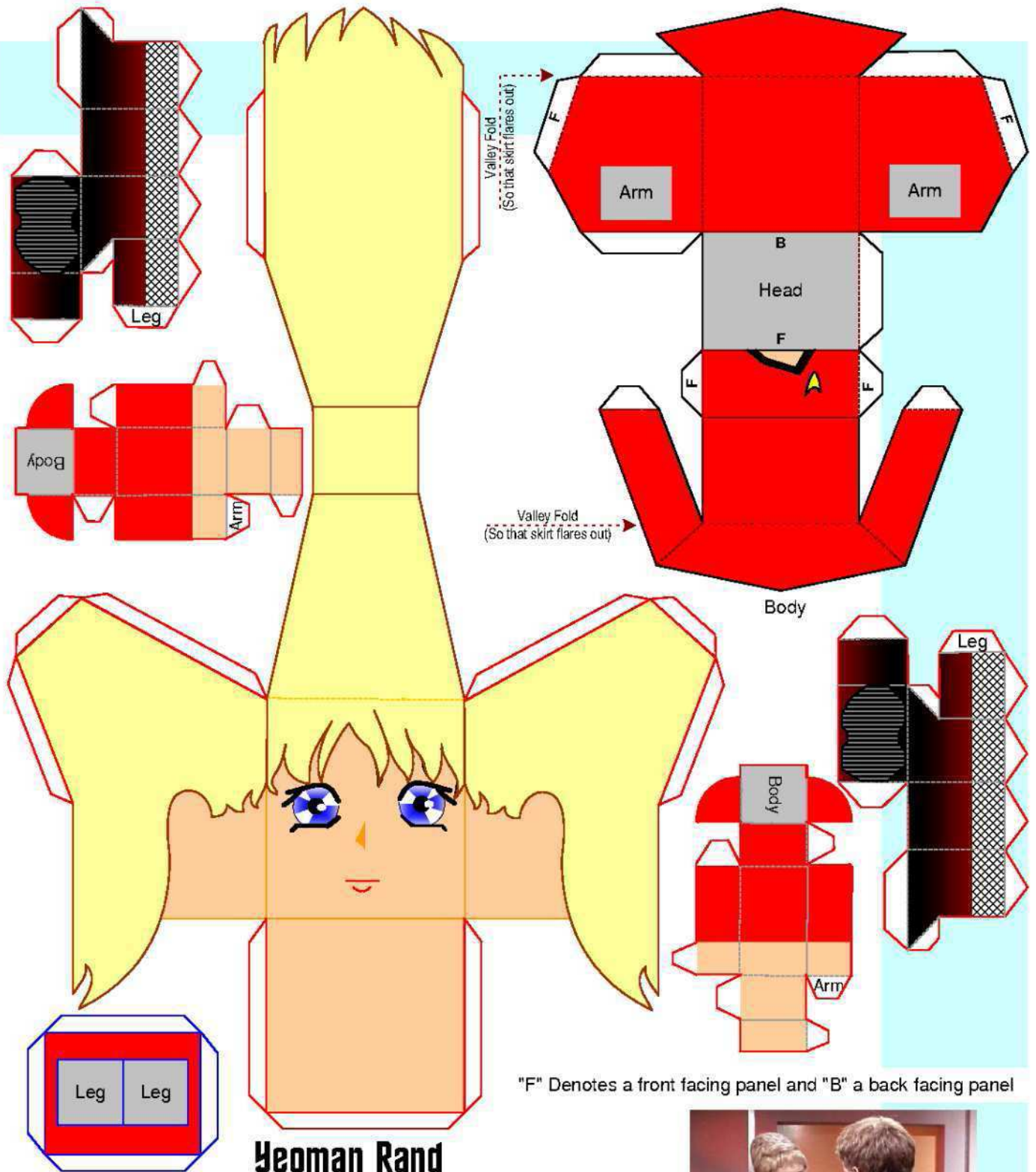
Lieutenant Uhura - Star Trek TOS
Ver. 1.0 Graphics by ButchPrice 2005

Original Template by Masamune Washington
<http://jove.prohosting.com/~madanger>



Mr. Chekov Ver.1 Star Trek TOS
Graphics by ButchPrice 2005
lfpjr@onlyinternet.net

Original Template by Masamune Washington
<http://jove.prohosting.com/~madanger>

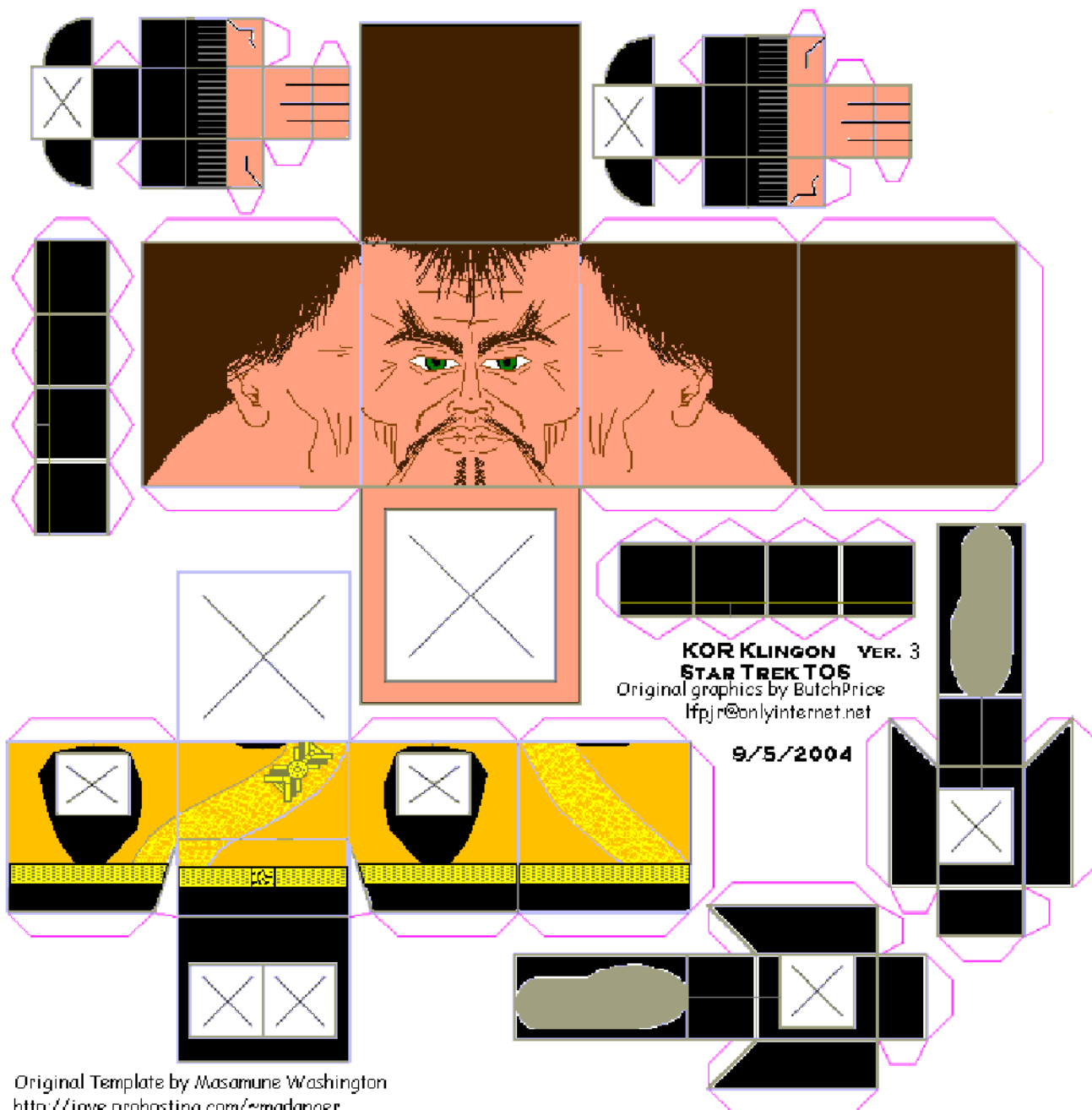


Yeoman Rand

From the original TV series "Star Trek"

This model, which is based on an original design by Masamune Washington, was created solely for the entertainment of the officers and crew of the USS Magellan and our friends. It is not intended to infringe on the copyrights or trademarks of Star Trek™, as held by Paramount Pictures and Viacom Entertainment. Permission is hereby granted to anyone who wishes to reproduce the original material herein for non-commercial use, provided that the source of the material is included.





KOR KLINGON VER. 3
STAR TREK TOS
Original graphics by ButchPrice
lfjpr@onlyinternet.net

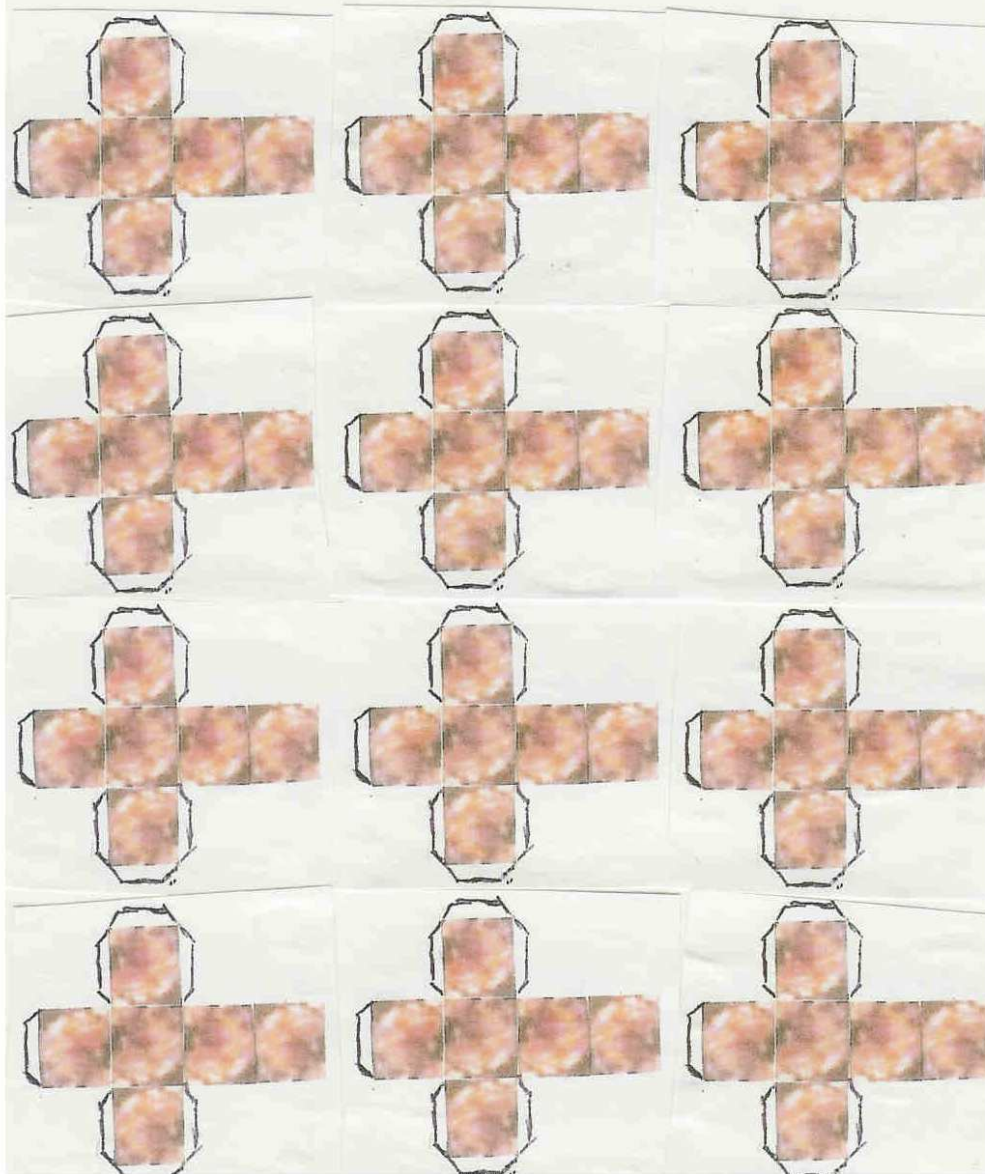
9/5/2004

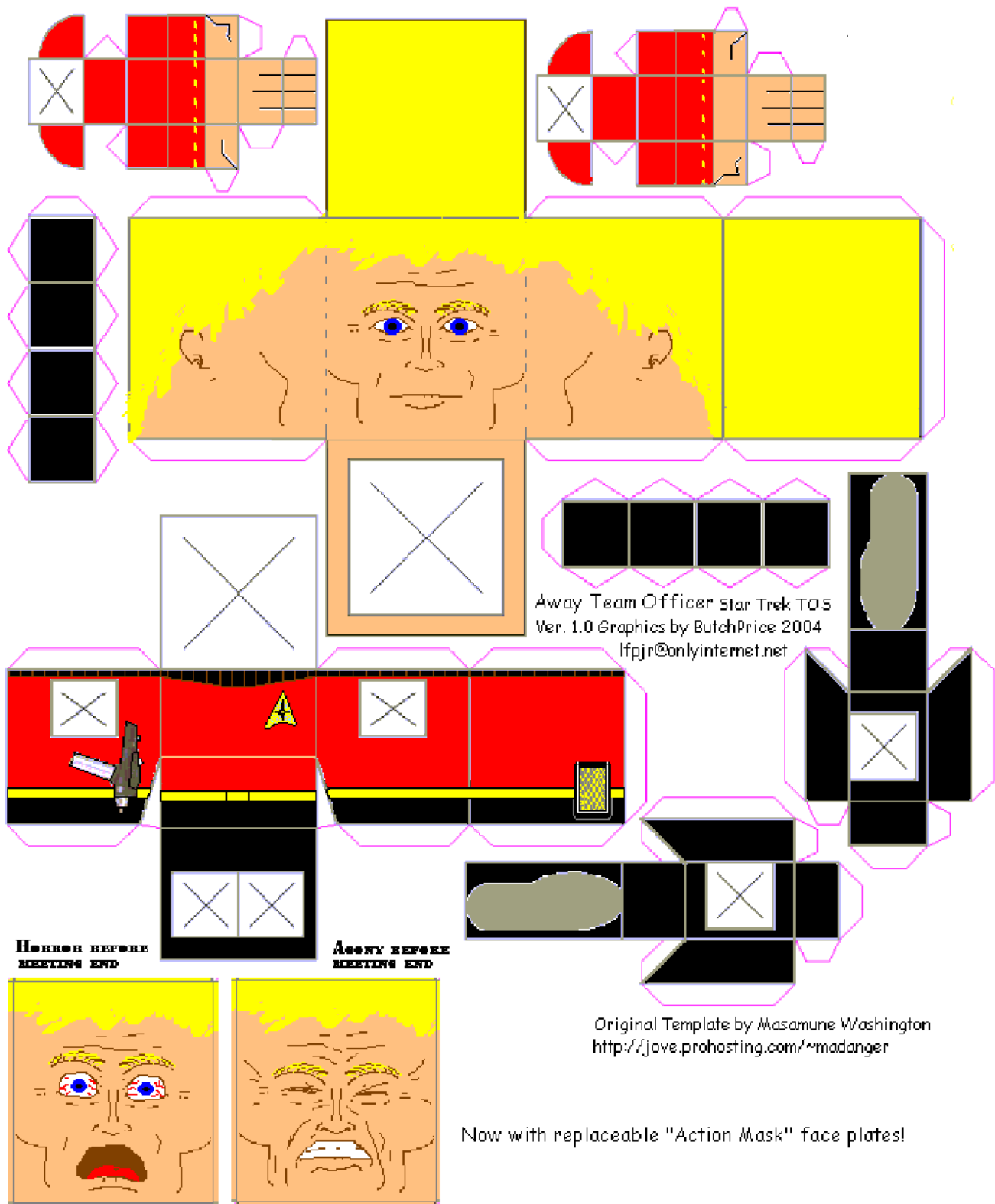
Original Template by Masamune Washington
<http://jove.prohosting.com/~madanger>

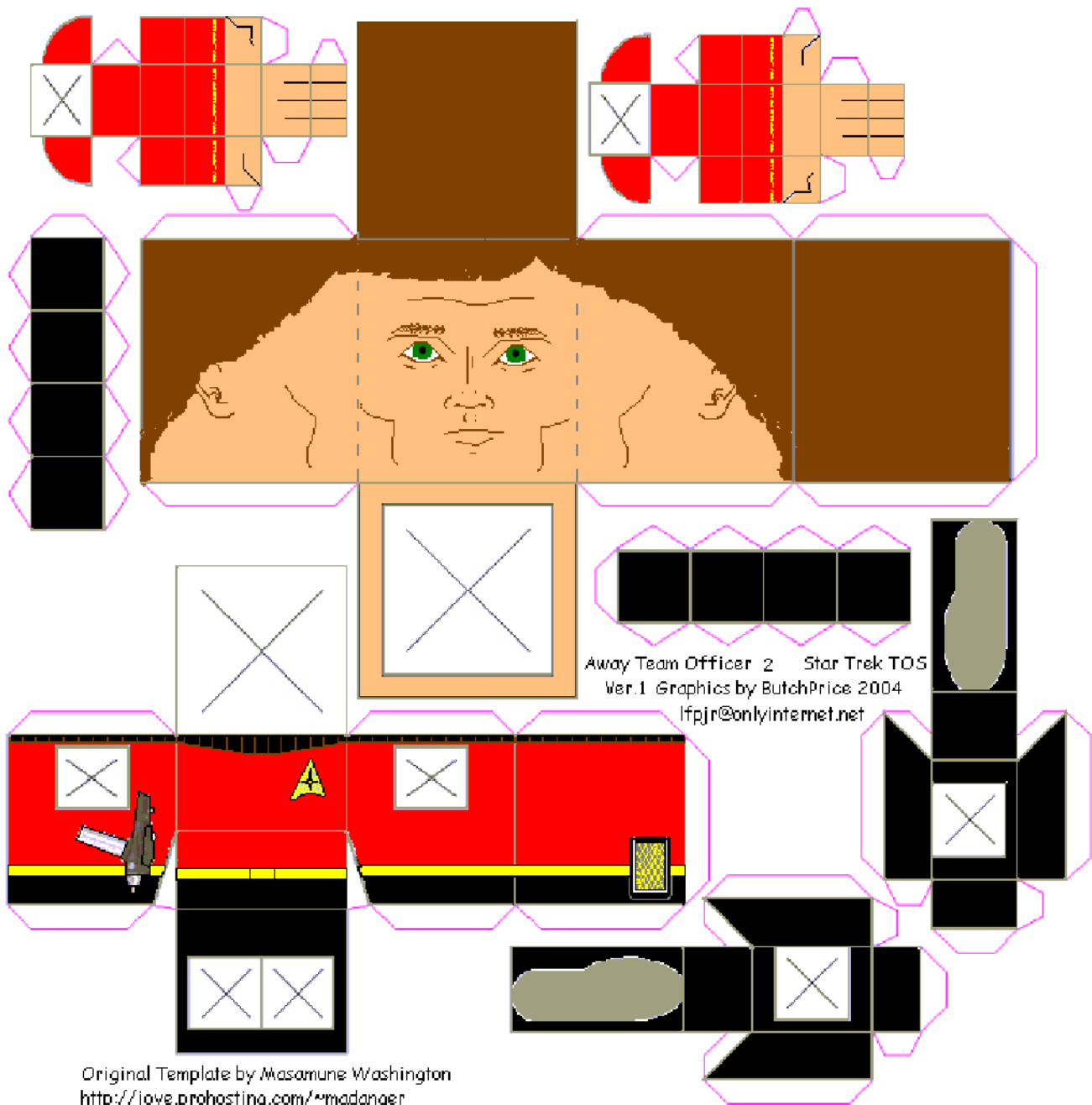
tribble_hako.png

HAKO TRIBBLE

The copyright for this model is held
by Frank Johnson DBA Viking Hobbies.
This is a free model and may be copied
for personal use but not monetary gain.
All inspiration for this is from
"The Mad Modeler Matsume" and Bruce's
Hako clone creations.







Original Template by Masamune Washington
<http://jove.prohosting.com/~madanger>

