

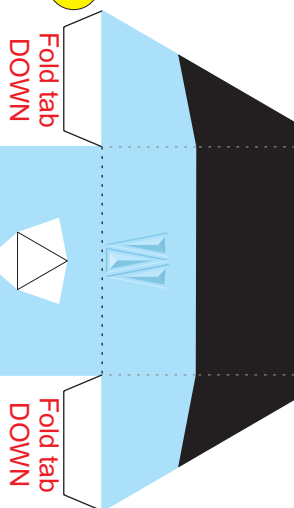
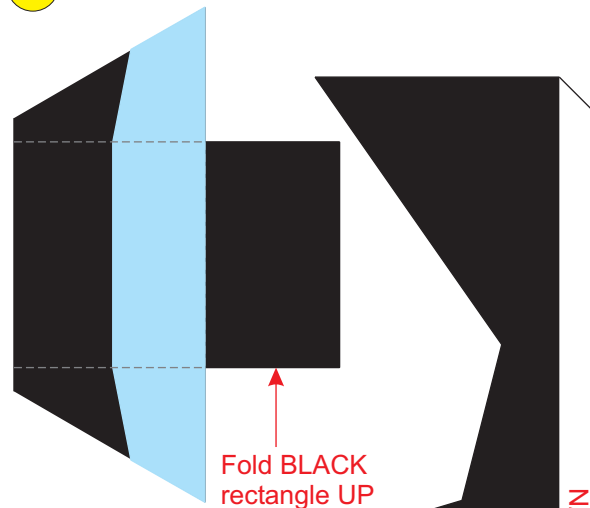
USS ENTERPRISE BRIDGE (NCC-1701)**Hako-sized Model design by Ron Caudillo (ronaldcaudillo@yahoo.com)**Print this page on 110 pound (199 g/m²) cardstock

Valley Fold (fold up) -----

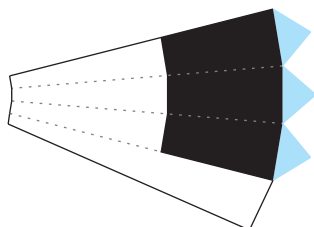
Mountain Fold (fold down) -----

Sized for Hako figures designed by: Masume Washington, Steve Marshall, and The Professor

centimeters

10 Chair**11 Chair Cushion****12 Chair Post**

Fold CYAN triangles UP



Fold DOWN

Fold DOWN

Fold DOWN

2 Console Right Side

Fold DOWN

Fold DOWN

Fold DOWN

3 Console Left Side

Fold DOWN

Fold DOWN

inches

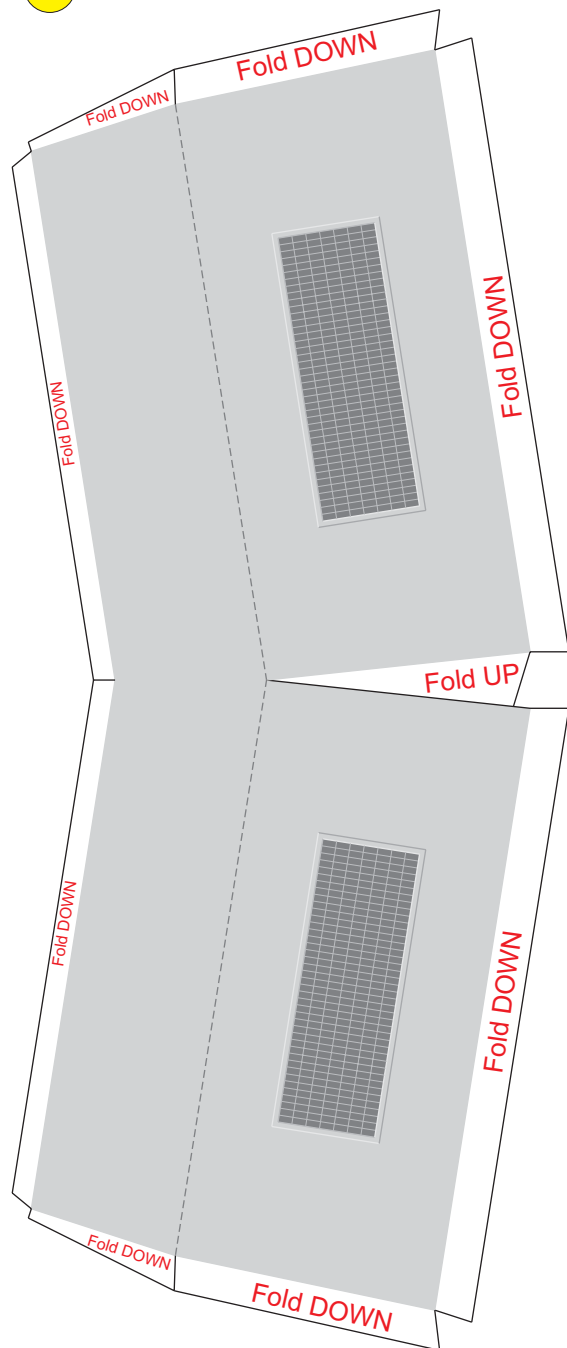
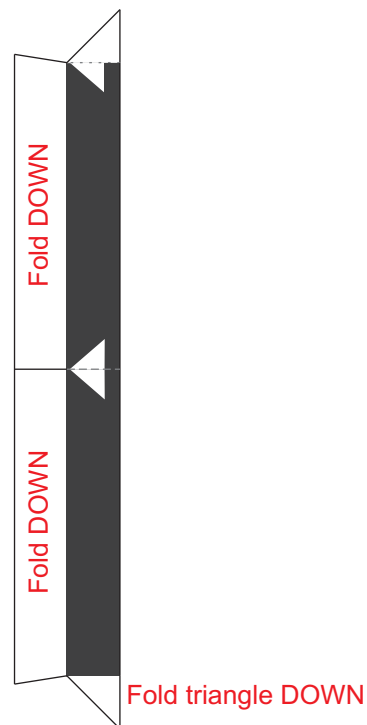
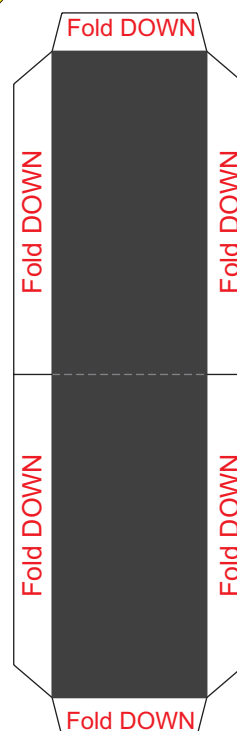
USS ENTERPRISE BRIDGE (NCC-1701)**Hako-sized Model design by Ron Caudillo (ronaldcaudillo@yahoo.com)**Print this page on 110 pound (199 g/m²) cardstock

Valley Fold (fold up) -----

Mountain Fold (fold down) -----

Sized for Hako figures designed by: Masume Washington, Steve Marshall, and The Professor

centimeters

4 Station Base**6 Base Front****7 Base Front Undercut**

inches

USS ENTERPRISE BRIDGE (NCC-1701)

Hako-sized Model design by Ron Caudillo (ronaldcaudillo@yahoo.com)

Print this page on 110 pound (199 g/m²) cardstock

Valley Fold (fold up) -----

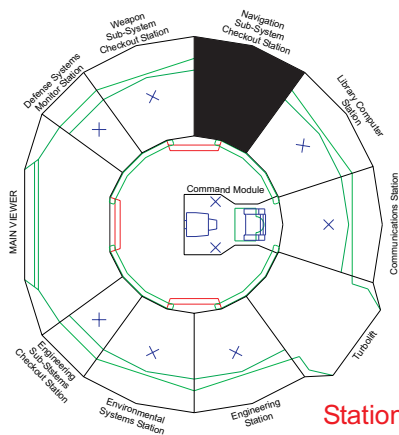
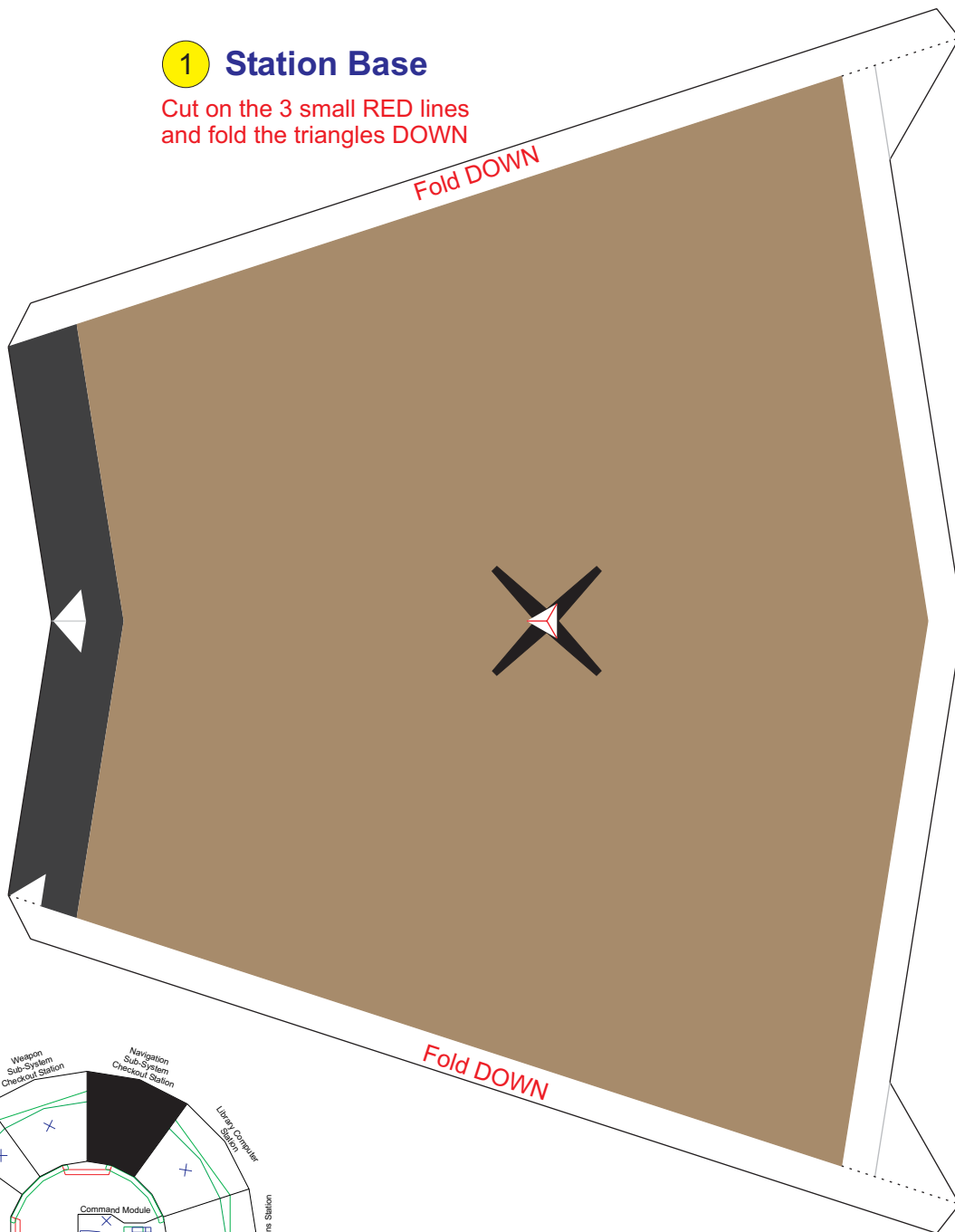
Mountain Fold (fold down)

Sized for Hako figures designed by: Masume Washington, Steve Marshall, and The Professor

centimeters

1 Station Base

Cut on the 3 small RED lines
and fold the triangles DOWN



Station location in bridge model

USS ENTERPRISE BRIDGE (NCC-1701)**Hako-sized Model design by Ron Caudillo (ronaldcaudillo@yahoo.com)**Print this page on 110 pound (199 g/m²) cardstock

Valley Fold (fold up) -----

Mountain Fold (fold down) -----

Sized for Hako figures designed by: Masume Washington, Steve Marshall, and The Professor

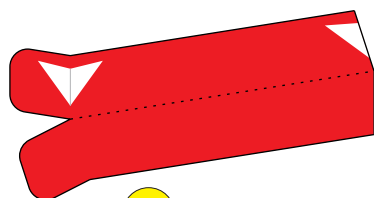
centimeters

13Fold RED
triangle DOWN**Right Side
Rail Support****14**Fold RED
triangles DOWN**Center
Rail Support****8****Station Bottom**

Designed by:

**CUSTOM MODELS**
Ron CaudilloSaddle Brook, New Jersey
ronaldcaudillo@yahoo.com

For Kirok of L'Stok's:

<http://12daysxmas.thunderdownunder.org/>**December, 2007****15****Railing**

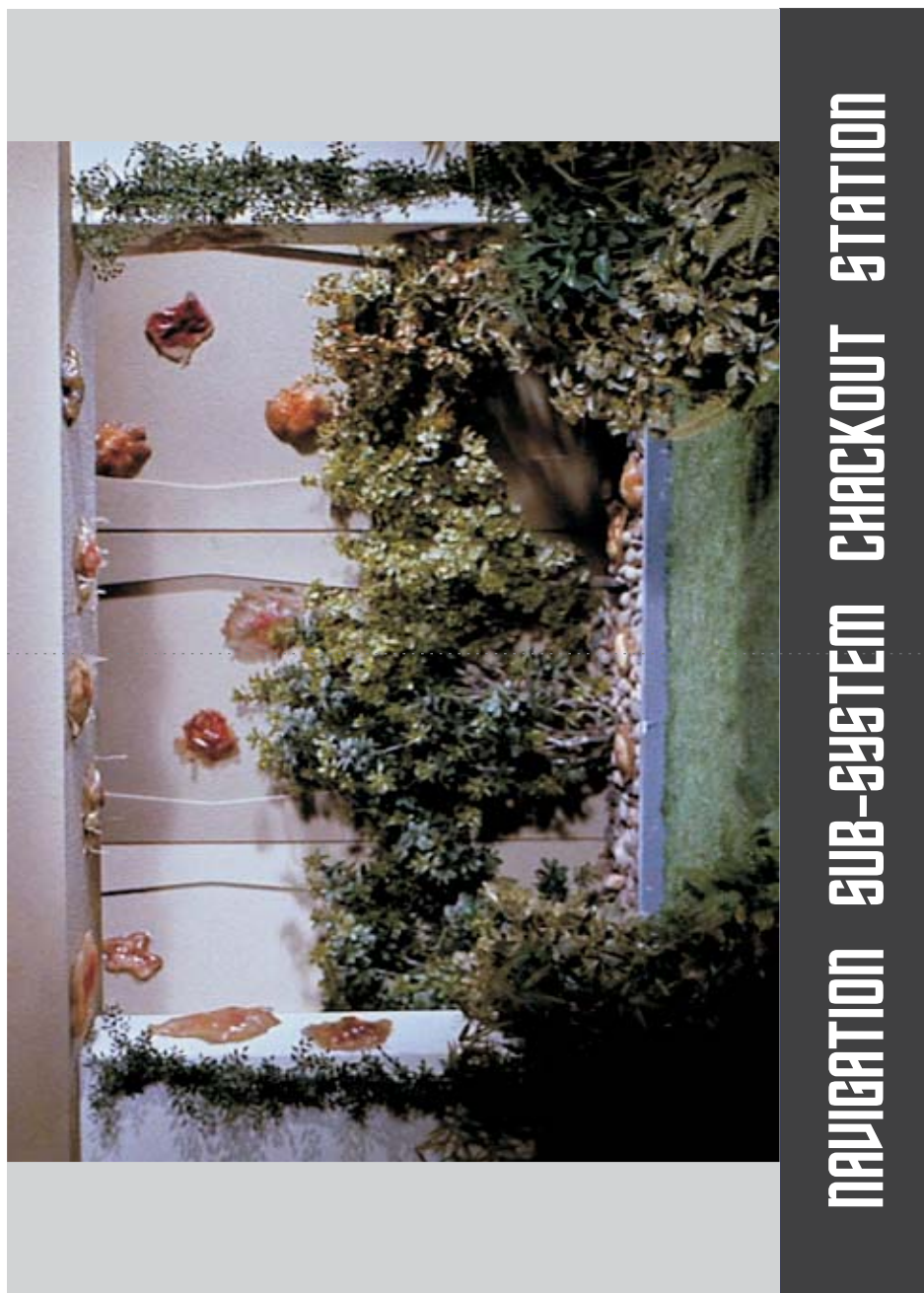
USS ENTERPRISE BRIDGE (NCC-1701)**Hako-sized Model design by Ron Caudillo (ronaldcaudillo@yahoo.com)**Print this page on 110 pound (199 g/m²) cardstock

Valley Fold (fold up) -----

Mountain Fold (fold down) -----

Sized for Hako figures designed by: Masume Washington, Steve Marshall, and The Professor

centimeters

9 Station Back

No copyright infringement intended. This is a fan produced design for the free enjoyment of all Star Trek fans everywhere. Star Trek in all forms is copyright and trademark of CBS Paramount Studios.