

Base for Saturn 1 SA-5 and Saturn 1b AS-210 in 1/96th Scale

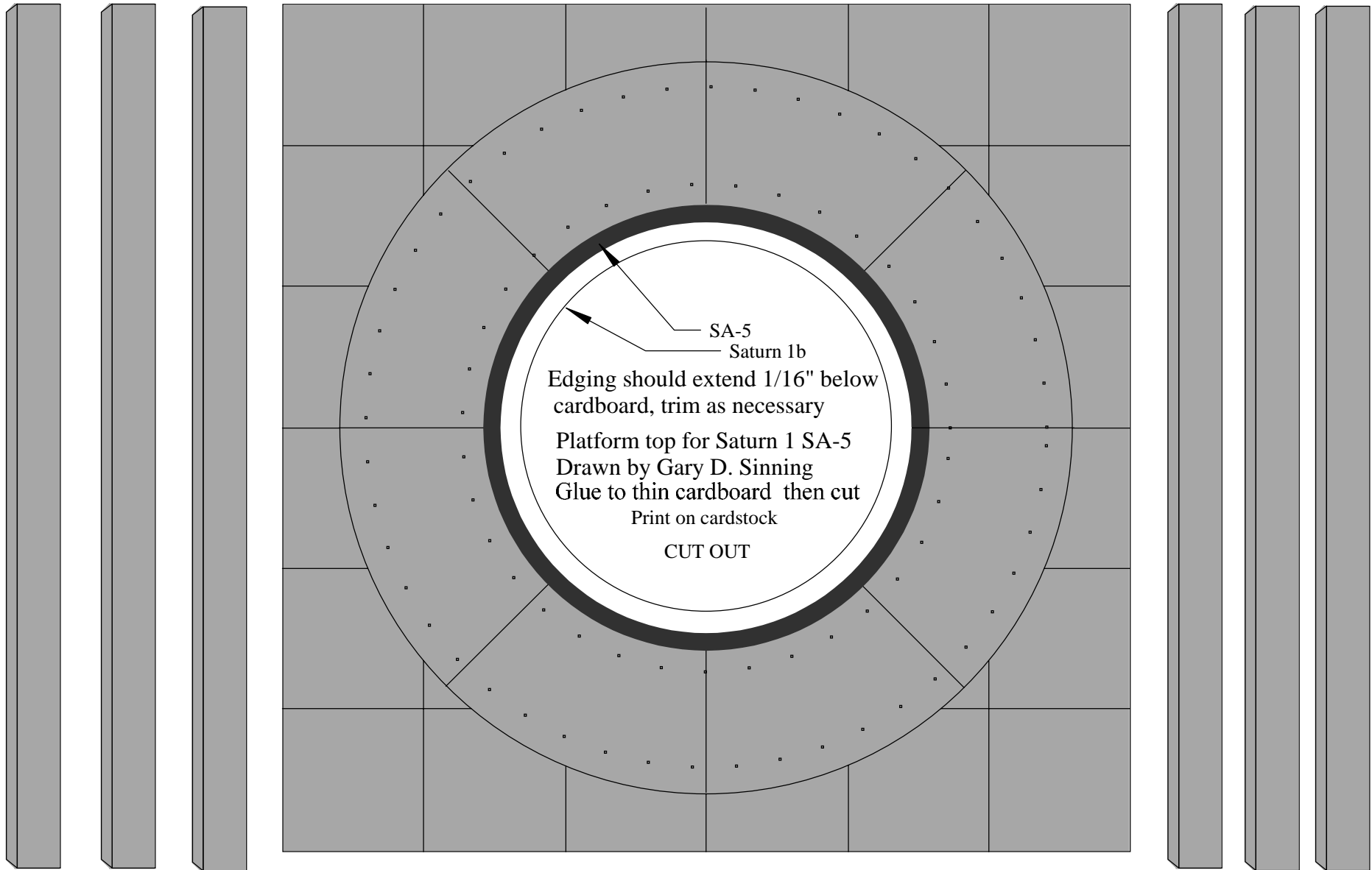
Build is straightforward just refer to the pictures. This fits both rockets. There should be 8 supports, but as I've read written by professional modelers "Sometimes you can add too much". I tried both 4 and 8 supports and found 8 supports detracted from the look. The pictures show it built for the Saturn 1 SA-5. The supports need to be moved in for the Saturn 1b, since the rocket base is smaller. Use your best guess.

The ring you see in the center is an optional item. I thought it looked good so added it. If you opt to use it, it is a piece of 3" shipping tube cut to 1" long. If building for the SA-5, use the black strip on the sheet for the outside and add the inner pattern piece. For the Saturn 1b use only the inner piece since the outer piece won't show. Glue the ring centered on the hole for the Saturn 1b.

Piping can be placed if wanted. You are on your own on this. It doesn't add or detract from the looks.

If placing above eye level, you might consider finishing the underside with scrap paper since it will be visible. I've got mine placed just above eye level and it really gives the impression of the size of the rockets.





SA-5
Saturn 1b

Edging should extend 1/16" below
cardboard, trim as necessary

Platform top for Saturn 1 SA-5

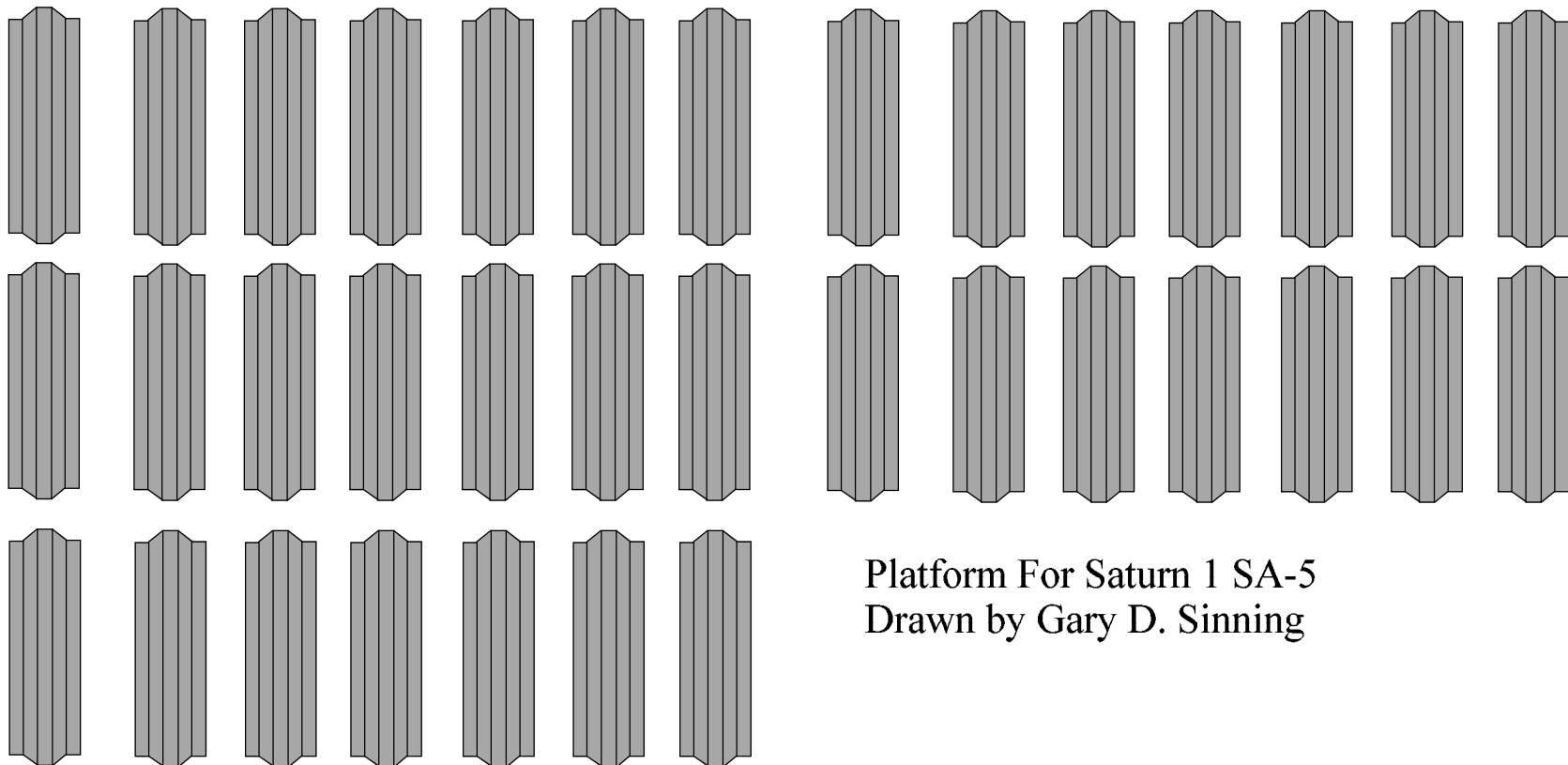
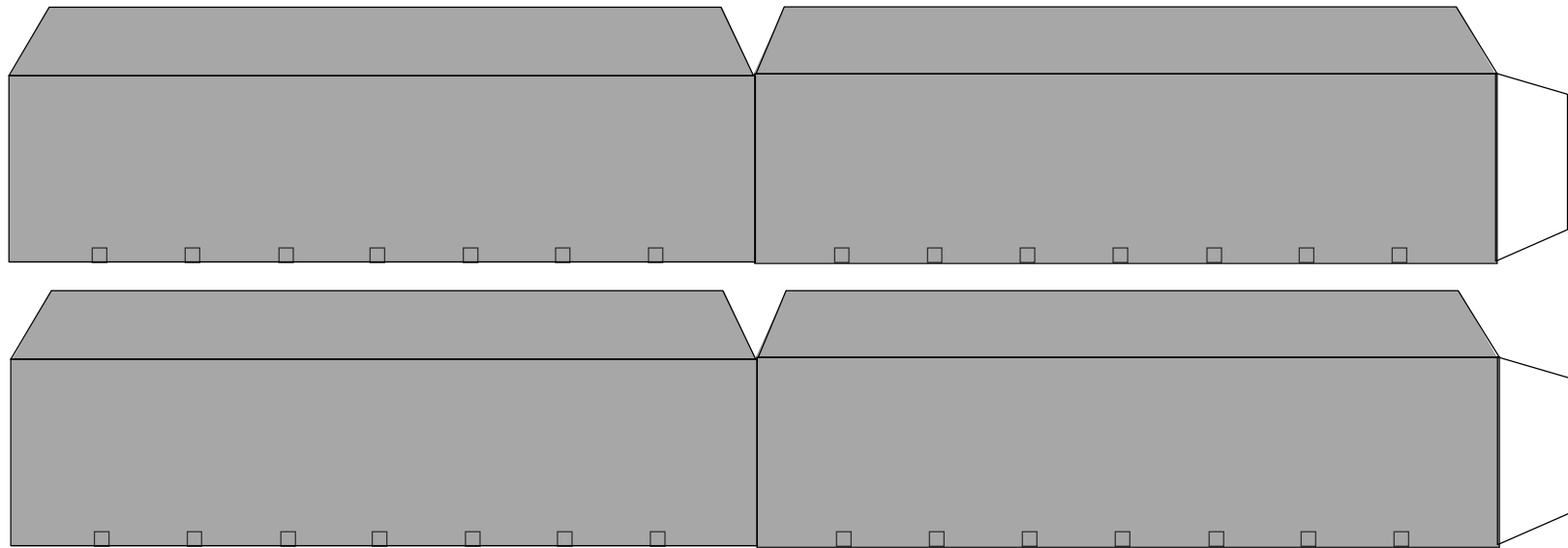
Drawn by Gary D. Sinning

Glue to thin cardboard then cut

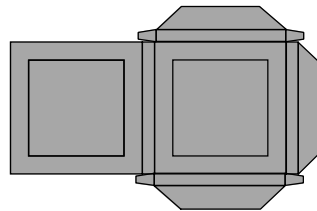
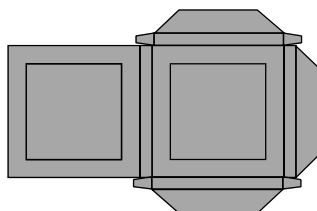
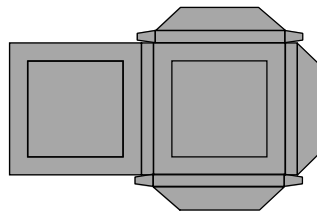
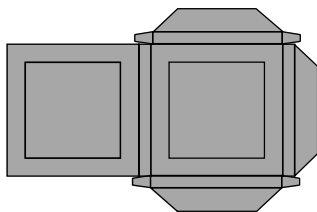
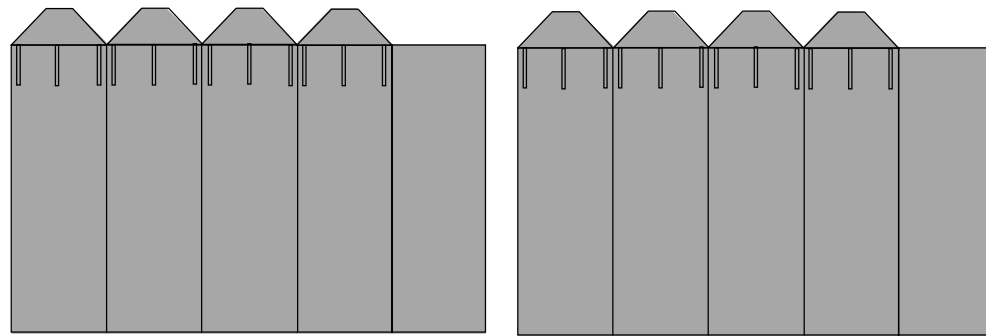
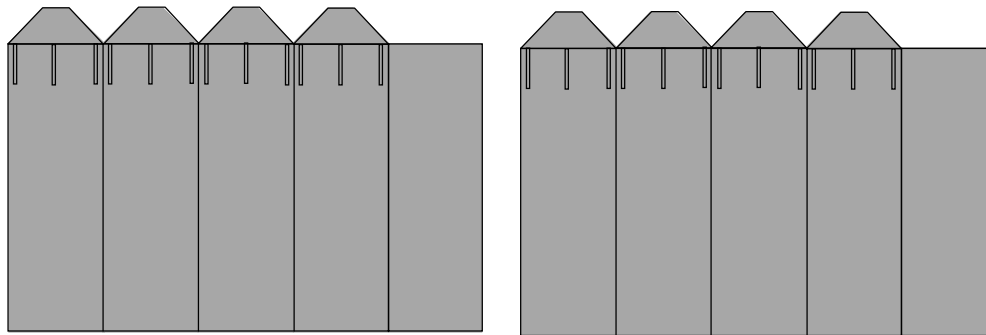
Print on cardstock

CUT OUT

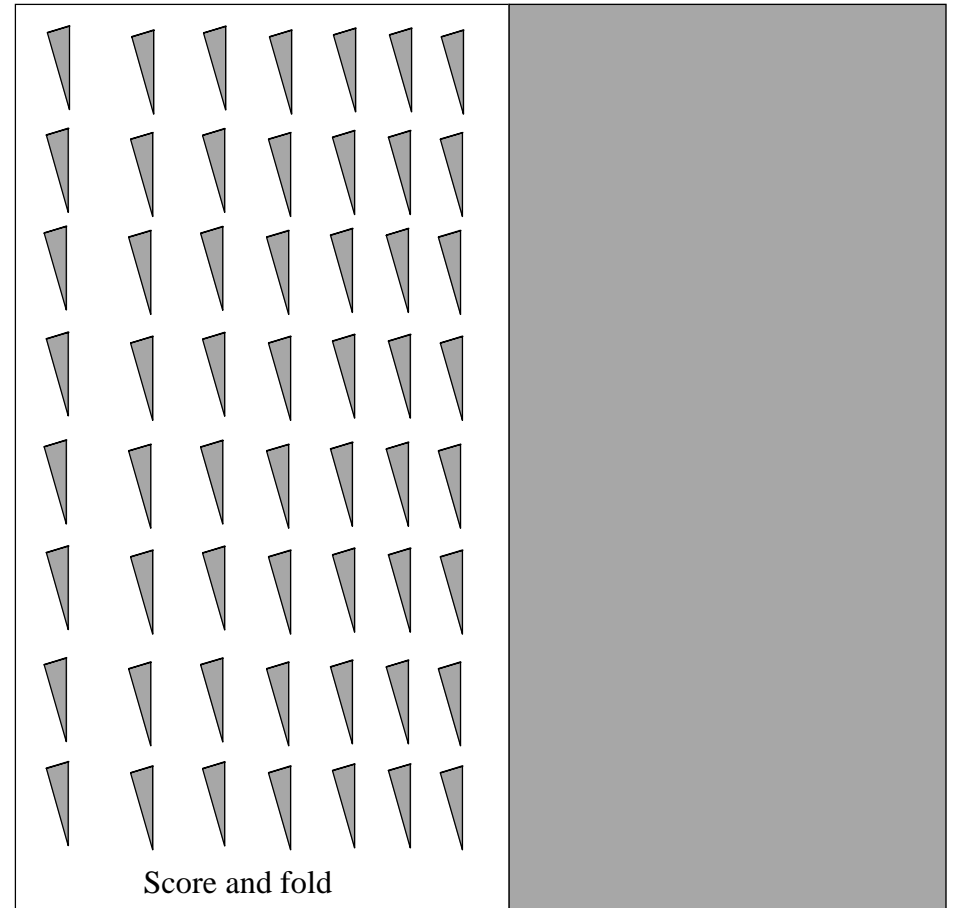
Lower platform and braces: Print on cardstock, glue to base, then put cardboard inside



Platform For Saturn 1 SA-5
Drawn by Gary D. Sinning

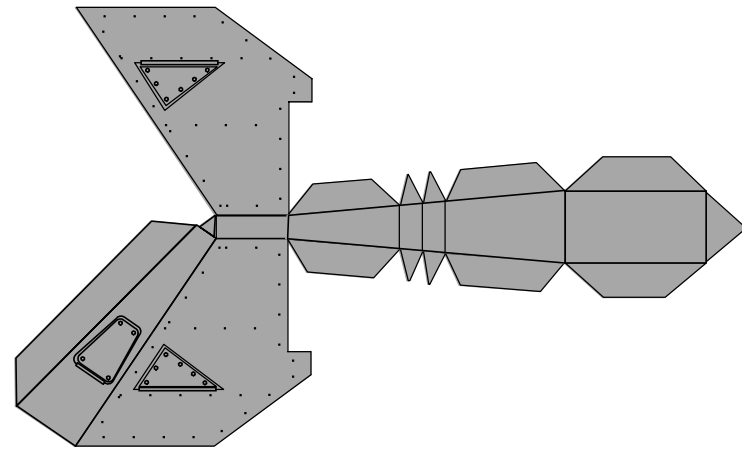
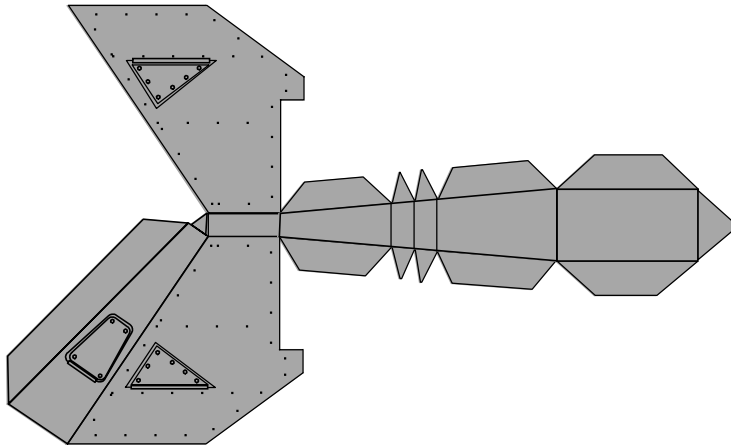
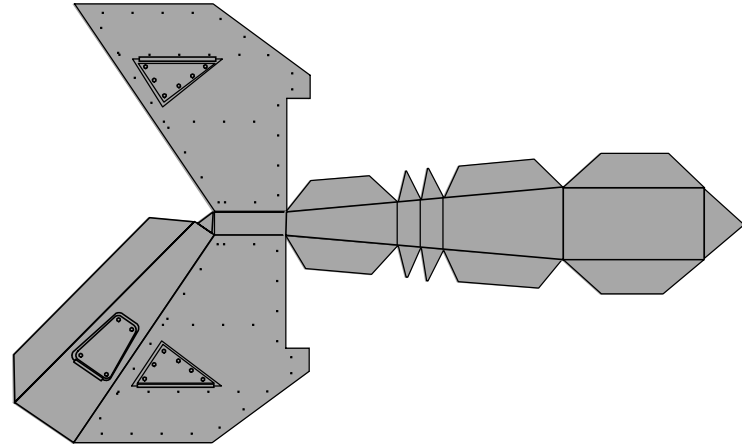
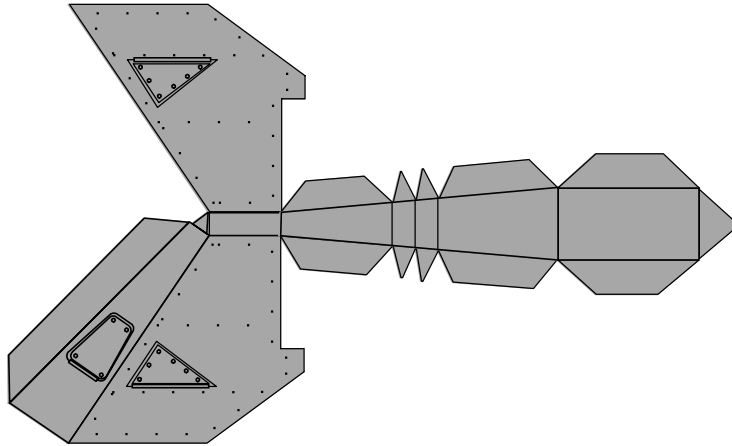


Leg parts
Print on cardstock



Saturn 1 SA-5 Platform
Drawn by Gary D. Sinning

Supports: set at 45 degree angle to corners



Rocket supports Saturn 1 SA-5
Drawn by Gary D. Sinning